

# DMGAudio EQuick

Audio Tools Crafted With Love

## Contents

<b>1</b>	<b>Introduction</b>	<b>3</b>
1.1	About EQuick . . . . .	3
1.2	System Requirements . . . . .	3
1.2.1	Windows . . . . .	3
1.2.2	Mac OS . . . . .	3
1.3	Installation and Setup . . . . .	4
1.3.1	How to Install on Windows . . . . .	4
1.3.2	How to Install on OS X . . . . .	4
<b>2</b>	<b>EQuick UI and Controls</b>	<b>6</b>
2.1	The Graph . . . . .	6
2.1.1	Creating bands . . . . .	7
2.1.2	Deleting bands . . . . .	7
2.1.3	Bypassing bands . . . . .	7
2.1.4	Adjusting bands . . . . .	7
2.1.5	Moving bands together . . . . .	7
2.1.6	Mouse wheel . . . . .	7
2.1.7	AutoListen . . . . .	8
2.1.8	Inverting gain . . . . .	8
2.2	The Zoom Bar . . . . .	8
2.3	Tooltips . . . . .	8
2.4	Top bar . . . . .	9
2.4.1	Preset . . . . .	9
2.4.2	Undo and Redo . . . . .	9
2.4.3	A/B . . . . .	9
2.4.4	Copy . . . . .	10
2.4.5	Stereo Mode . . . . .	10
2.4.6	VU . . . . .	11
2.4.7	Setup . . . . .	11
2.4.8	Analyser . . . . .	11

2.4.9	EQ Enable . . . . .	11
2.5	VU and Gain Section . . . . .	11
2.5.1	Gain / VU Meter . . . . .	11
2.5.2	Stereo . . . . .	12
2.5.3	Mode . . . . .	12
2.5.4	Size . . . . .	12
2.5.5	Range . . . . .	12
2.6	Presets . . . . .	12
<b>3</b>	<b>Preferences and Options</b>	<b>12</b>
3.1	Mouse and Meter Preferences . . . . .	13
3.1.1	Mouse Wheel Sensitivity . . . . .	13
3.1.2	Meter Type . . . . .	13
3.1.3	Meter Peak/Hold . . . . .	13
3.1.4	Hide Mouse . . . . .	13
3.1.5	Inverted Q . . . . .	13
3.1.6	Slider Labels . . . . .	14
3.1.7	Swap Alt/Right . . . . .	14
3.1.8	New Band Types . . . . .	14
3.2	Graph Preferences . . . . .	14
3.2.1	Graph Filled Bands . . . . .	14
3.2.2	Graph Display . . . . .	15
3.2.3	Graph Readout . . . . .	15
3.2.4	Graph Background . . . . .	15
3.2.5	Graph Tooltips . . . . .	15
3.2.6	Graph Crosshairs . . . . .	15
3.2.7	Graph Filter Drags . . . . .	15
3.2.8	Graph Band Numbers . . . . .	16
3.3	Analyser Preferences . . . . .	16
3.3.1	Analyser Hides EQ . . . . .	16
3.3.2	Analyser Decay . . . . .	16
3.3.3	Analyser Opacity . . . . .	16
3.3.4	Analyser Range . . . . .	16
3.3.5	Analyser Top . . . . .	16
3.3.6	Analyser Tilt . . . . .	17
3.3.7	Analyser Smoothing . . . . .	17
3.3.8	Analyser Colour . . . . .	17
3.3.9	Analyser Display . . . . .	17
3.3.10	Analyser Curves . . . . .	17
3.4	Misc Preferences . . . . .	17
3.4.1	Number Format . . . . .	17

1	INTRODUCTION	3
3.4.2	FFT Update Throttle	18
3.4.3	Frequency Labels	18
3.4.4	AutoListen Gain	18
3.4.5	AutoListen Q	18
3.4.6	AutoListen Ignores Q	18
3.4.7	Solo Mode	18
3.4.8	Refresh Rate	18
3.5	Credits Page	19
4	Troubleshooting	19
4.1	Get in touch	19

# 1 Introduction

## 1.1 About EQuick

EQuick is a thoroughly modern, go-to EQ for making rapid and precise adjustments.

It is designed to excel everywhere: mixing, sound design, mastering and post-production.

The CPU usage is exceptionally low, and it offers 32 bands of extremely-high precision curves.

Internally, it's an MS processor and each band can process the Mid, the Side or both.

There's no distortion, and the curves are as perfect as they can be.

The interface is stripped down completely to give you all the control you need, but with no clutter or extra content to distract you. It's even configurable in size to fit your workflow.

## 1.2 System Requirements

### 1.2.1 Windows

EQuick works with Windows XP, Vista and Windows 7, 32bit and 64bit. VST and VST3 are supported in both 32bit and 64bit hosts. RTAS is supported in 32bit ProTools 7 or newer.

### 1.2.2 Mac OS

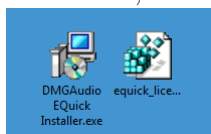
EQuick requires OSX 10.4.11 or better, on G4, G5 or Intel mac. VST, VST3 and AU are supported in both 32bit and 64bit hosts. RTAS is supported in

32bit ProTools 7 or newer.

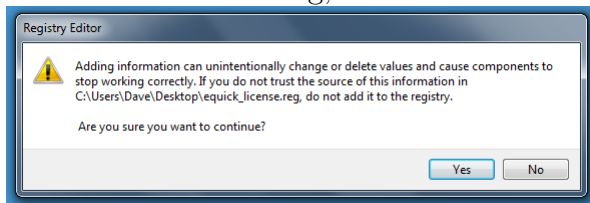
## 1.3 Installation and Setup

### 1.3.1 How to Install on Windows

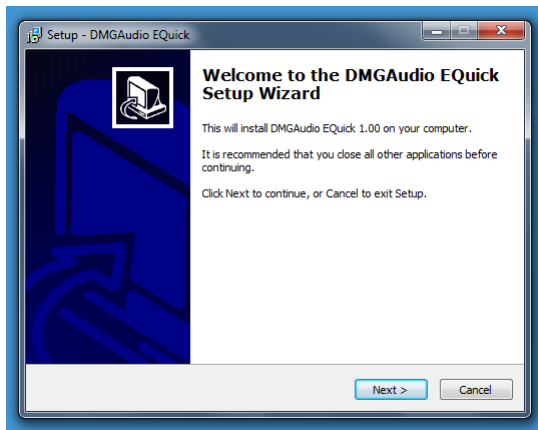
You need two files to install; the plugin installer and the license file. Both are available in your User Area. If you're using a demo, download the installer from the site, and use the form to have your license file emailed to you.



Double-click license.reg, and this box will open:



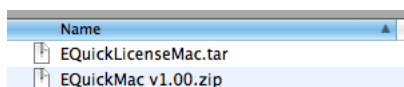
Click “Yes” and the license is installed. Now double-click the .zip file which contains the installer. Double-click the installer; it will look like this:



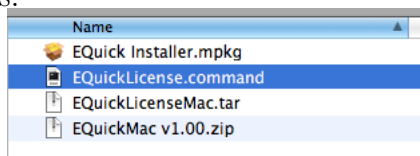
Click “next” (changing any options if you need to), and EQquick is installed! Reload your host, and enjoy!

### 1.3.2 How to Install on OS X

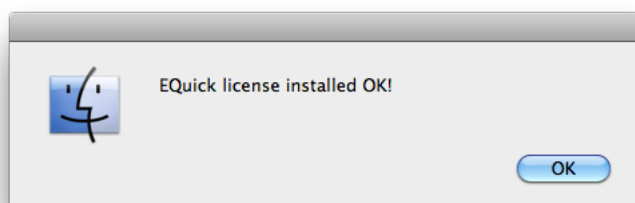
You need to download both the installer and the license file. Both are available in your user area. If you're using a demo, download the installer from the site, and use the form to get your license file emailed to you.



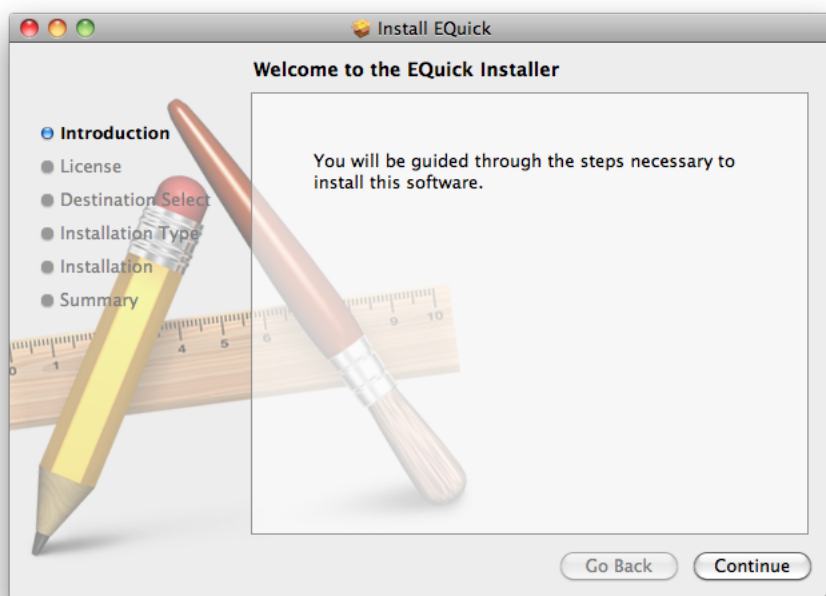
If you are using Safari, one or both of these files may be automatically unzipped for you. If not, double-click them to decompress them, so you get this:



Double-click “EQuickLicense.command” to install the license. The license will install, and you’ll get the following message to confirm:



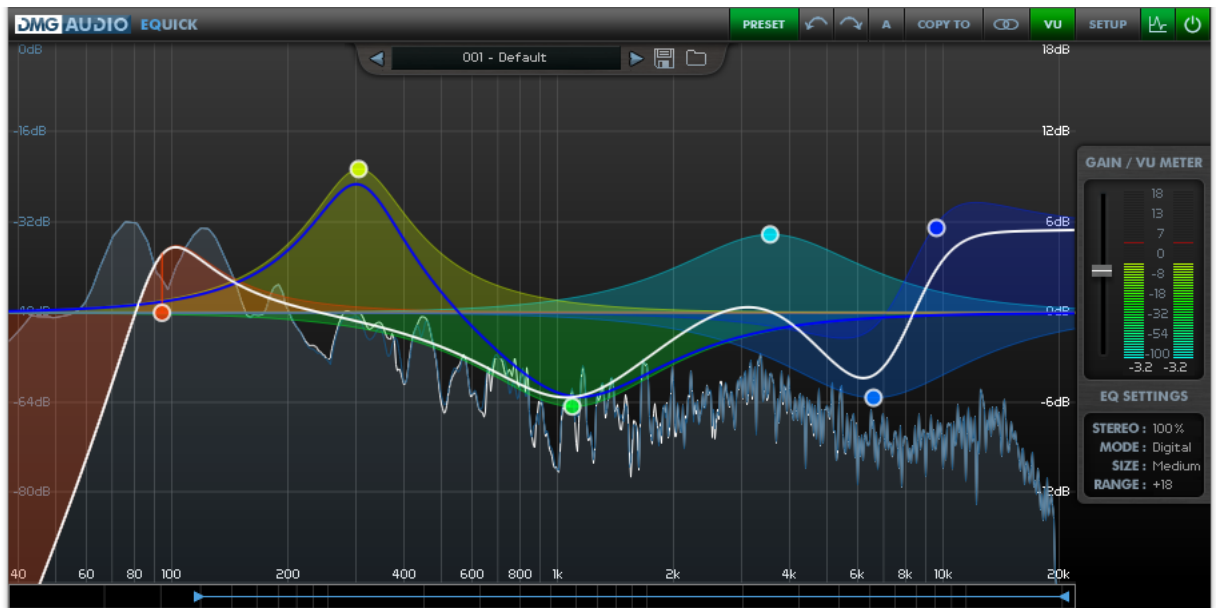
Now double-click the installer, and it will launch. It looks like this:



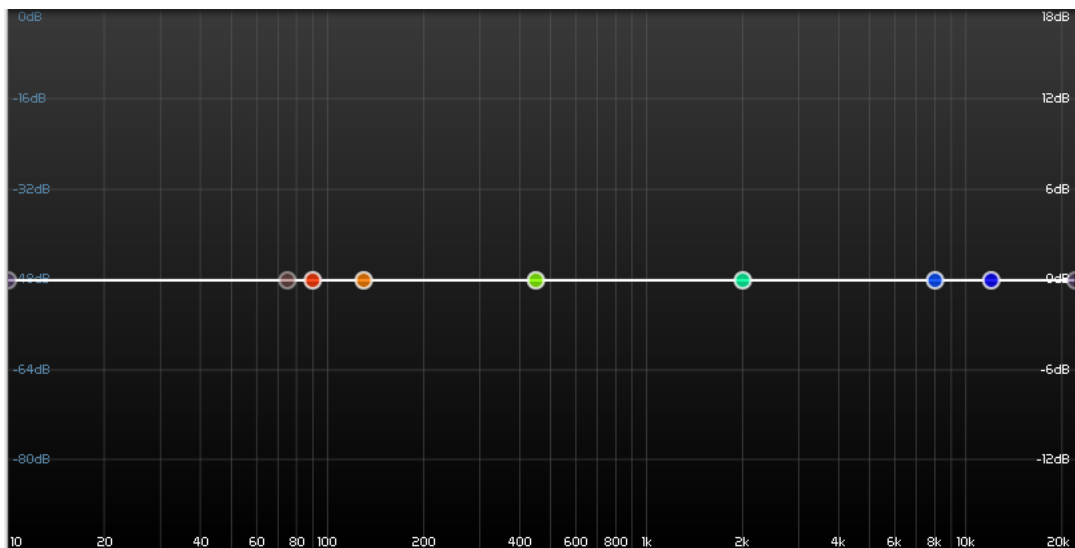
Click through until it installs, and everything is set! Now relaunch your

host and enjoy!

## 2 EQquick UI and Controls



### 2.1 The Graph



The graph is a visual representation of the EQ response. It shows you everything that is going on, plus a spectrum analyser display of the signal

it's processing.

### **2.1.1 Creating bands**

Double-click to create a new band.

By default, a new band will be a Peak, at the frequency and gain where you click, with a Q of 0.7.

Using preferences, you can get EQuick to guess what you meant, and create different types based on where you click.

### **2.1.2 Deleting bands**

You can delete bands by Alt+double-clicking or Alt+Control/Apple-clicking on the band's circular handle.

### **2.1.3 Bypassing bands**

If you Control/Apple click a band's handle, the band will toggle between bypassed and engaged.

### **2.1.4 Adjusting bands**

You can click and drag a band to change its frequency and gain. If the band is a notch, dragging up and down will adjust Q. If the band is a filter, dragging up and down will adjust either Q or Slope (see Preferences).

You can alt-click and drag a band to adjust Q, and Shift (for shelves, which controls whether the resonance of the shelf is above or below the curve, for a shelf with Q greater than 0.7).

### **2.1.5 Moving bands together**

Dragging a box on the graph will select multiple bands. You can drag or alt-drag them together to manipulate multiple bands simultaneously.

### **2.1.6 Mouse wheel**

Using the mouse wheel while over (or dragging) a band allows you to adjust the band's Q.

### 2.1.7 AutoListen

Using the right mouse-button instead of the left mouse-button while adjusting a band will engage AutoListen. This feature bypasses all other bands, and configures the band to allow you to hear exactly what you're affecting. This can be extremely useful for finding frequencies, and the preferences allow you a great deal of control over how it behaves.

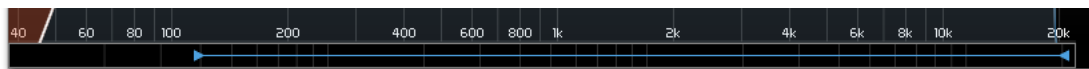
There's also a preference to swap Right-button and Alt, so if you prefer, you can AutoListen by alt-dragging and adjust Q with the right-hand button.

Note that when adjusting multiple bands, the AutoListen will allow you to audition the band that you are actually dragging.

### 2.1.8 Inverting gain

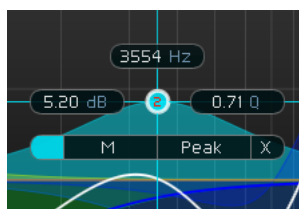
A single right-click on a band's handle will invert the band. This can be very useful for some workflows (such as identifying and removing a frequency range from a signal).

## 2.2 The Zoom Bar



The Zoom Bar allows you to zoom in on a frequency range for precision work. Grab either end of the bar to zoom in on a frequency range, or grab the middle to scroll left or right to move up or down the spectrum. Right-click to reset to full range zoom.

## 2.3 Tooltips



When selecting a band, tooltips are shown, allowing you to read off and numerically adjust the values for the band. Double-click a number to text-enter a new value.

At the top is the frequency, to the left is the gain, and to the right is the Q.

For shelves, an additional Slope control is shown, allowing you to adjust where the resonance develops (above or below the curve). For notches, Gain



is not shown. For filters, the Gain is replaced by a Slope control, allowing you to set the Slope in decibels per octave, from 6dB/oct to 48dB/oct, in 6dB steps.

At the base the long bar has a bypass button on the far left, the “channels” menu to the left of center (which allows you to configure whether the band affects the Mid, the Side or both channels), on the right is the “type” control (which allows you to pick between Peak, Shelves, Filters and Notch types), and on the far right is the band deletion button, which will remove the band.

In the preferences, you can configure a condensed “Type 2” tooltip, as below:



The top of like the tooltip here has Bypass, Channels, Type and Delete, as for Type 1, and the controls are listed below.

## 2.4 Top bar



The bar at the top of the UI contains controls to allow you to configure the behaviour of EQuick.

### 2.4.1 Preset

This button will open the Preset pane, to allow you to select, import and export presets.

### 2.4.2 Undo and Redo

This section contains controls to Undo/Redo changes (history is saved until you close the session).

### 2.4.3 A/B

EQuick allows each instance to retain a bank of 8 sets of settings, so you can quickly audition different settings. The A/B menu allows you to choose a value from A-H, each of which will store a setting for your convenience.

Right-clicking the AB button allows you to toggle between the current AB bank, and the previous bank.

### 2.4.4 Copy

The Copy menu relates to the A/B menu. If, while working, you wish to save the current state of the plugin to a different A/B bank, select the bank you wish it to be saved in from the Copy menu. For instance, if you have a presence boost at 1k, and are working with bank A, and you Copy that to bank B (to save it away), and you then move the presence boost to 2k (still working with bank A. This will not change unless you use the A/B menu), you can now select A and B from the A/B menu to move the peak from 1k to 2k and back, to audition the change.

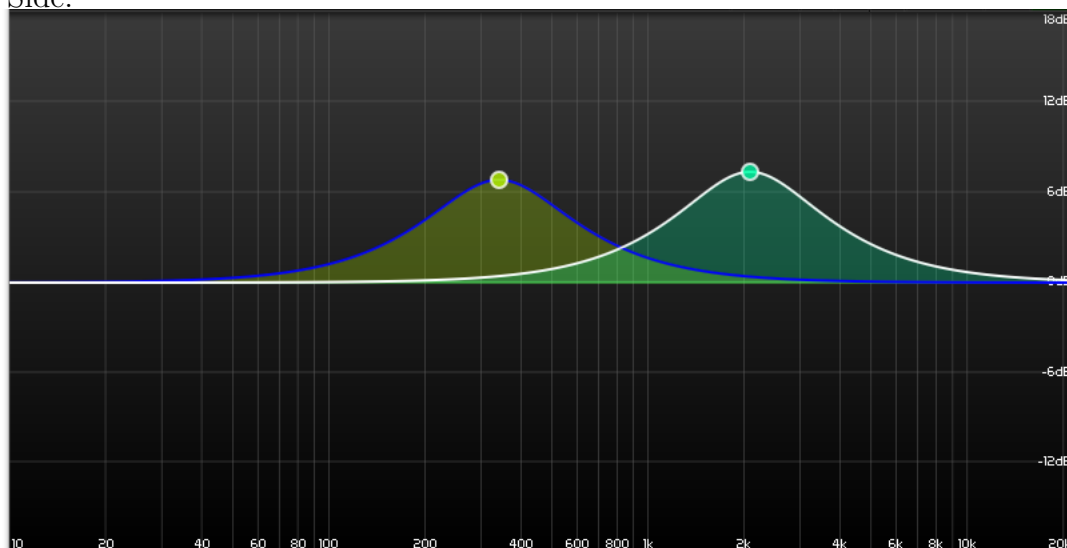
### 2.4.5 Stereo Mode

By default, EQuick is a stereo EQ, operating equally on the left and right channels of input audio. However, in EQuick, you can adjust the Mid and Side EQs independently. Each band of EQ can process the Mid, the Side, or both Stereo channels together.

When Stereo is selected, both curves are shown. When Mid or Side is selected, the EQ shape corresponding to that channel is shown, and the other is hidden.

The final entry on the Stereo Mode menu is a Solo. When enabled, this will mute any channel which is not being processed. This means that you can enable the Solo to hear only the Mid or Side data.

This image shows two bands, one processing the Mid, and one processing the Side.



This image shows Stereo mode, where both curves are shown. In Mid mode, only the right-hand bell would be visible (since it is processing the

Mid but not the side). In Side mode, only the left-hand bell would be visible, (since it only affects the Side band).

### 2.4.6 VU

This button will open the panel containing the VU meter, output gain, and the extra EQ Settings.

### 2.4.7 Setup

This button opens/closes the floating Setup pane.

### 2.4.8 Analyser

Toggling this button will enable or disable the spectrum analyser.

### 2.4.9 EQ Enable

When this button is green, the EQ is engaged. Use this button to quickly bypass/re-enable the processing.

## 2.5 VU and Gain Section



This section opens when you click “VU” on the top bar.

### 2.5.1 Gain / VU Meter

This section contains the output meter. The scale is in dB. The box underneath is a readout of the peak values on each channel, using the ballistics chosen in Setup. The red marks above the meter values hold the peak values.

To the left is the output gain fader, which has a range of +/-36dB.

Below this is the “EQ SETTINGS” box.

### 2.5.2 Stereo

The “Stereo” control allows you to adjust the stereo width, from 0% (mono) to 200% (twice as wide).

### 2.5.3 Mode

The “Mode” control allows you to select the processing mode. “Digital” has the same ultra-high quality sound as EQuality, and has ultra-low CPU usage. “Linear” engages a Linear-phase processing mode, which has a (compensated) latency, and imparts no phase-smearing on the signal; this is used typically in a mastering context.

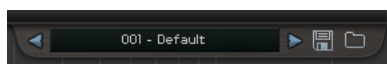
### 2.5.4 Size

With this setting, you can adjust the on-screen size of EQuick, from very small to huge, in 5 different settings.

### 2.5.5 Range

This adjusts the minimum range that will be displayed on the graph. You can use this to zoom in for fine adjustments, or to zoom out in order to make radical adjustments.

## 2.6 Presets



The preset bar slides down over the graph when “PRESET” is selected on the top bar.

To the left is the preset selection menu. The arrows either side let you select the next preset with a single click. Right-click the preset name to enter a new one.

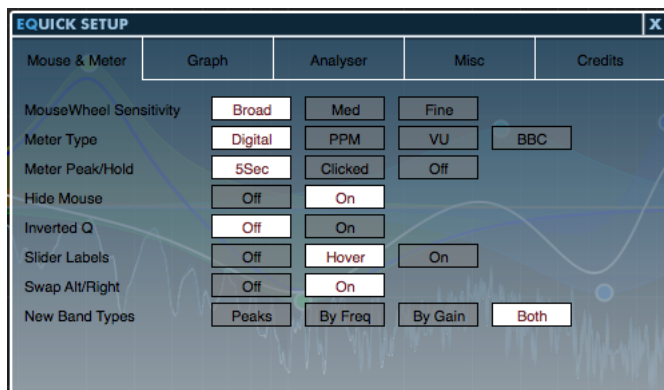
Next to this are the preset save and load buttons, which allow you to export/import banks of 20 presets as an “.eqi” file.

## 3 Preferences and Options

Click the setup button on the top-right of the top bar and the Setup window will open, allowing you to adjust your preferences.

Preferences apply to all instances and are saved globally.

## 3.1 Mouse and Meter Preferences



### 3.1.1 Mouse Wheel Sensitivity

Use this to calibrate how big an adjustment a single “click” of the mouse wheel makes to a control.

### 3.1.2 Meter Type

Select the meter ballistics you want the EQuick VU to use. Digital PPM will reflect all peaks. The other modes respond to the signal in more musical ways, by ignoring a certain degree of transience, and taking time to release once signal has muted.

### 3.1.3 Meter Peak/Hold

Use this to select whether the peak values of the meter are held indefinitely (until the meter is clicked, to reset), held for 5 seconds, or not recorded at all.

### 3.1.4 Hide Mouse

When “On” the mouse will be hidden during drag operations on the UI, to minimise distraction.

### 3.1.5 Inverted Q

This option inverts the Y-axis when alt-dragging to adjust Q on the graph, so that dragging upwards will cause Q to widen rather than narrow.

### 3.1.6 Slider Labels

This governs the behaviour of the numerical readouts of the slider controls. When “Off”, the readouts are never shown. When “On”, the readouts persist next to the slider handle. In “Hover” mode, the readouts are shown when you move the mouse over the slider.

### 3.1.7 Swap Alt/Right

When engaged, this will swap the functionality of the right-hand mouse button and alt-click, so AutoListen will engage when alt-dragging, and right-dragging will adjust Q, rather than the converse.

### 3.1.8 New Band Types

When double-clicking to create new bands, EQuick can use a set of rules to guess which type and parameters it should use for the new band.

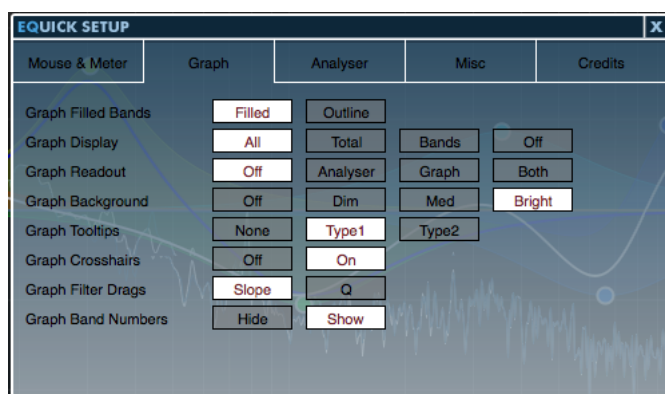
When “Peaks” is selected, new bands are always Peaks with a Q of 0.7

When “By Freq” is selected, bands created below 20Hz will be high-pass filters, bands below 100Hz will be low shelves, bands above 4kHz will be high shelves and bands above 10kHz will be low-pass filters.

When “By Gain” is selected, bands created at the very bottom of the graph will be Notches, bands created in the higher and lower 25% will be given a Q of 1.2, and other bands in the centre 50% will be given a Q of 0.7.

Selecting “Both” is equivalent to engaging both “By Freq” and “By Gain”

## 3.2 Graph Preferences



### 3.2.1 Graph Filled Bands

Use this to choose filled or outlined band responses on the graph.

### 3.2.2 Graph Display

Use this to configure whether the graph displays the overall response and/or the band responses.

### 3.2.3 Graph Readout

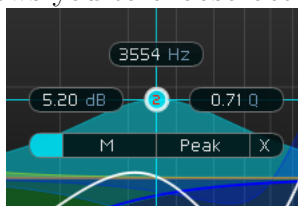
Use this to select whether the Graph has a superposed readout indicating mouse-location, analyser values and graph values.

### 3.2.4 Graph Background

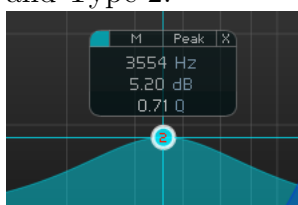
This allows you to adjust the intensity of the log bars displayed behind the graph, from Off to Bright.

### 3.2.5 Graph Tooltips

There are two different tooltip modes available in EQuick. This preference allows you to choose between Type 1:



and Type 2:



or select None to disable tooltips entirely.

### 3.2.6 Graph Crosshairs

Use this to disable drawing the crosshairs when moving a band.

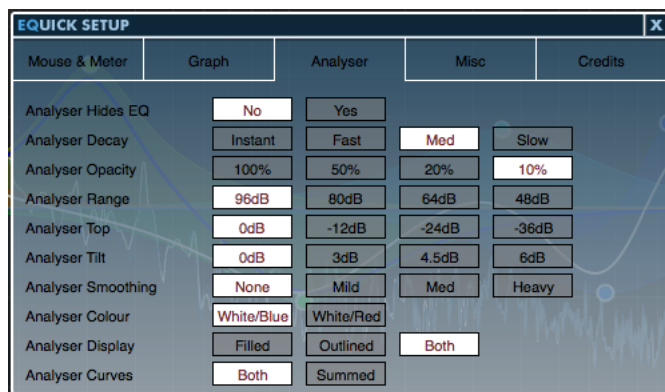
### 3.2.7 Graph Filter Drags

When dragging filters up and down, you can use this to determine whether EQuick treats your adjustment as an adjustment of Q or filter Slope.

### 3.2.8 Graph Band Numbers

This configures whether EQuick displays the band number inside the band's handle, to make automation easier.

## 3.3 Analyser Preferences



#### 3.3.1 Analyser Hides EQ

Use this option to disable the graph display when the analyser is active.

#### 3.3.2 Analyser Decay

Use this to select the rate of decay of the analyser, to give a smoothed (easier-to read) response, or a faster (more accurate) response.

#### 3.3.3 Analyser Opacity

Use this to choose the opacity of the analyser overlay on the graph.

#### 3.3.4 Analyser Range

Use this to choose how many dB of range are displayed by the analyser to show or hide low-level detail

#### 3.3.5 Analyser Top

This allows you to configure the highest dB value displayed by the analyser. Using Range and Top you can configure EQuick to zoom the analyser in on narrow, low ranges.



### 3.3.6 Analyser Tilt

This settings allows you to compensate for spectral coloration. At 0dB, white noise appears flat on the analyser. At 3dB, pink noise appears flat. At 6dB red/brown noise appears flat.

### 3.3.7 Analyser Smoothing

If you find the accuracy of the Analyser distracting, use this setting to smooth the response to give a more approximate view of the spectral content.

### 3.3.8 Analyser Colour

Configures the colour of the Analyser plot.

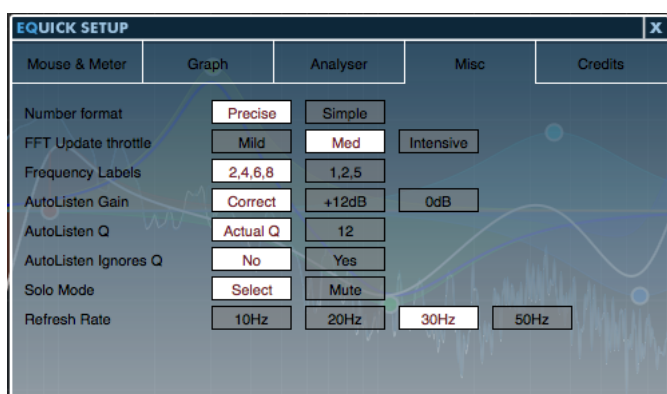
### 3.3.9 Analyser Display

This setting allows you to choose the aesthetic used for displaying the analyser curves; you can select filled, outlined or filled and outlined curves.

### 3.3.10 Analyser Curves

You can configure EQuick to display a summed curve, showing the average of Left and Right, rather than the two independent curves.

## 3.4 Misc Preferences



### 3.4.1 Number Format

Use this to switch between using 'simple' number display (e.g. 15k) or 'precise' number display (e.g. 15000)

### 3.4.2 FFT Update Throttle

Use this to control how fast EQuick responds to coefficient changes in Linear phase mode.

### 3.4.3 Frequency Labels

Use this to control how the frequency markings on the graph are labelled.

### 3.4.4 AutoListen Gain

When AutoListen is engaged, this option allows you to specify whether the output level reflects the settings of the band (“correct”) or has a fixed value, which may make monitoring easier.

### 3.4.5 AutoListen Q

When AutoListen is engaged, you can choose to hear your actual settings (“correct”) or jump to a Q of 12, to assist with locating frequencies, without needing to adjust the band’s Q.

### 3.4.6 AutoListen Ignores Q

This preference allows you to prevent EQuick from engaging AutoListen when Q is being adjusted. In this mode, only frequency and gain changes will engage AutoListen.

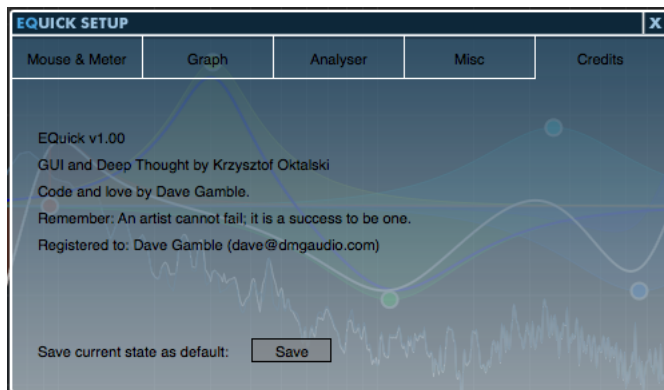
### 3.4.7 Solo Mode

In “Select” mode, enabling Solo will play the selected channel through both output channels. In “Mute” mode, enabling Solo will mute the unselected channel.

### 3.4.8 Refresh Rate

The allows you to configure the refresh rate of EQuick; at high refresh rates, EQuick will look smoother, but use more CPU. At low refresh rates, you’ll save CPU, but EQuick may be less quick to react.

### 3.5 Credits Page



This page shows the version number, credits, and registration details for EQQuick.

Also, the "Save current state as default" button allows you to configure how EQQuick starts up by default. To use it, instantiate a new EQQuick, and set it up how you want EQQuick to open in future (pick UI size, preset, range, etc). Click "Setup", to open the Setup window, select Credits, and now click "Save current state as default". From now on, new instances of EQQuick will open with the settings you just saved.

To revert to factory settings, navigate to:

- Mac: /Users/<username>/Library/Application Support/DMGAudio/EQQuick
  - Windows: C:\Program Files\DMGAudio\EQQuick
- and remove "Default Bank.eqb".

## 4 Troubleshooting

### 4.1 Get in touch

If you run into trouble, get in touch! We're here to help, after all!

You can visit this page: [http://dmgaudio.com/index.php?\\_view=home.contact](http://dmgaudio.com/index.php?_view=home.contact)

Or you can just email me: [dave@dmgaudio.com](mailto:dave@dmgaudio.com)